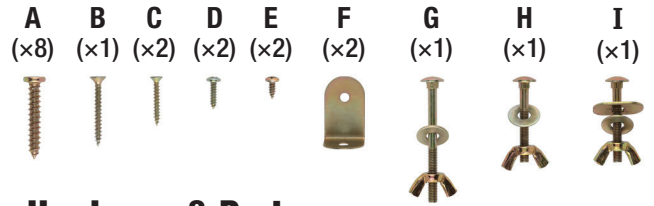


Van Gogh

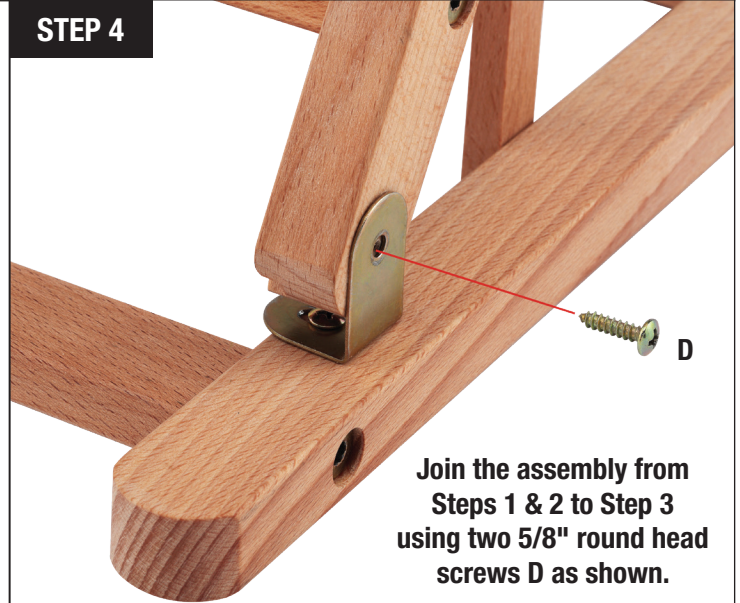
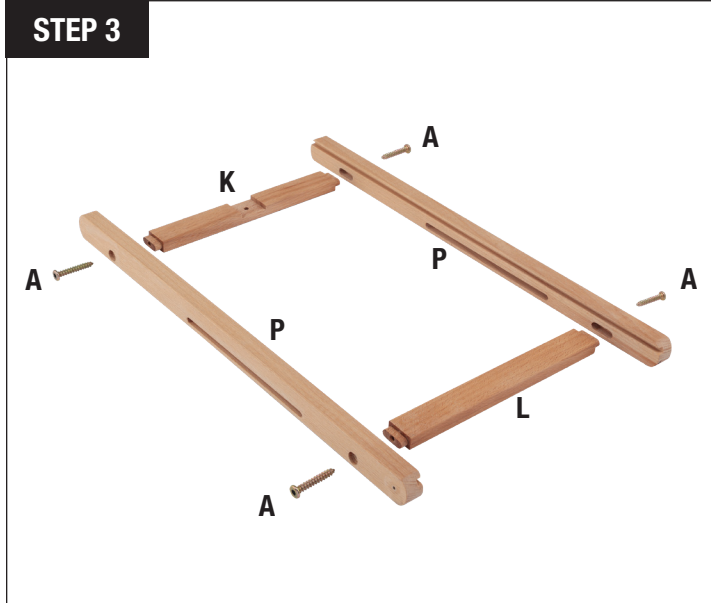
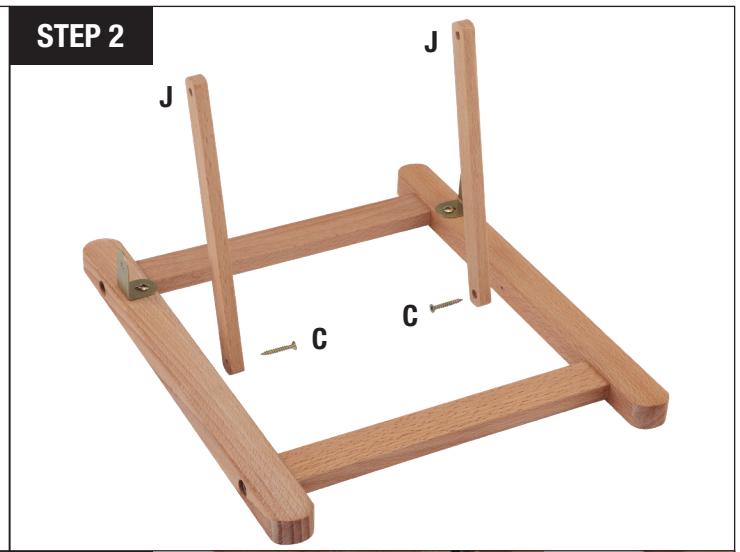
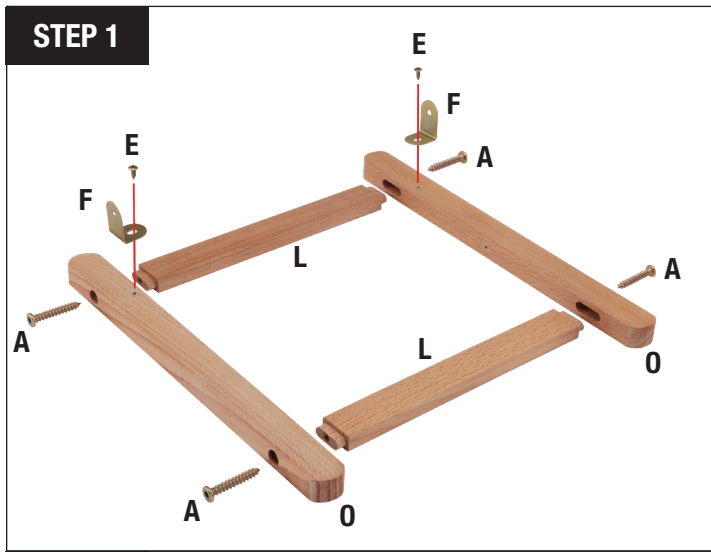
Table Easels Assembly Instructions



Hardware & Parts:

- A. 1-5/8" hex head screws (x8)
- B. 1-1/4" wood screw (x1)
- C. 3/4" wood screws (x2)
- D. 5/8" round head screws (x2)
- E. 1/2" round head screws (x2)
- F. L-bracket (x2)
- G. Longest bolt with washer and wingnut (x1)
- H. Bolt with washer and wingnut (x1)
- I. Bolt with 2 washers and wingnut (x1)
- J. Left and right side support bars (x2)
- K. H-frame top cross support bar (x1)
- L. Cross support bars (x3)
- M. Bottom canvas support tray (x1)
- N. Top canvas support (x1)
- O. Left and right base feet (x2)
- P. Left and right H-frame side bars (x2)
- Q. Center mast (x1)

Tool
included:



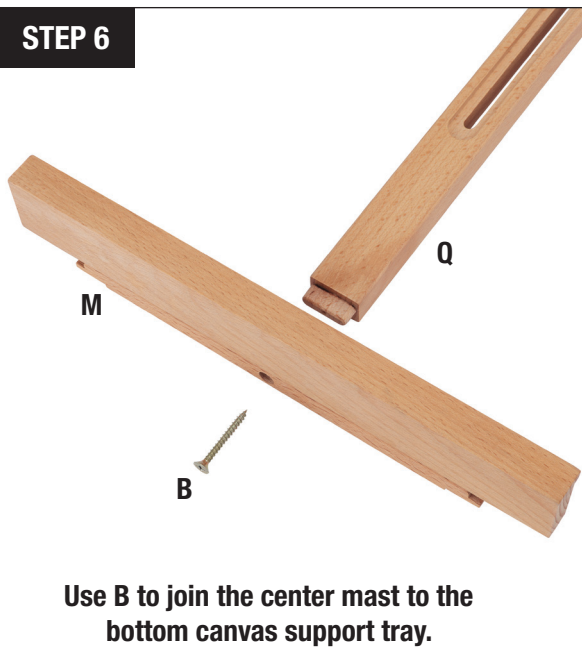
STEP 5

Use H to join side support bars.



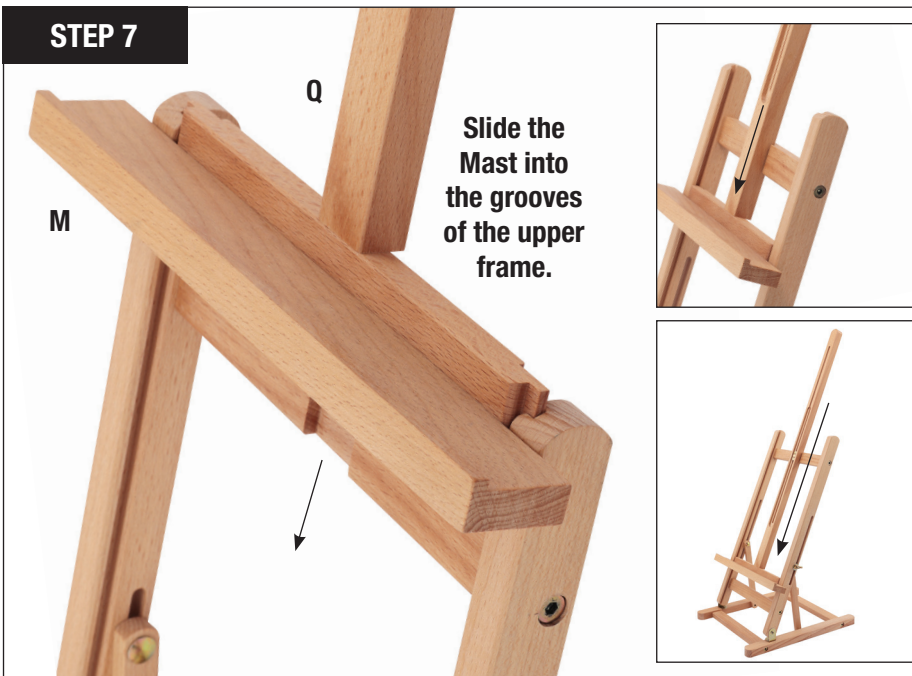
STEP 6

Use B to join the center mast to the bottom canvas support tray.



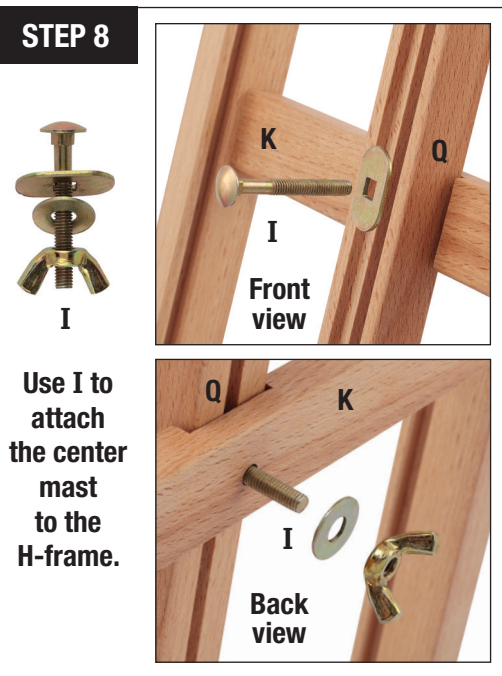
STEP 7

Slide the Mast into the grooves of the upper frame.



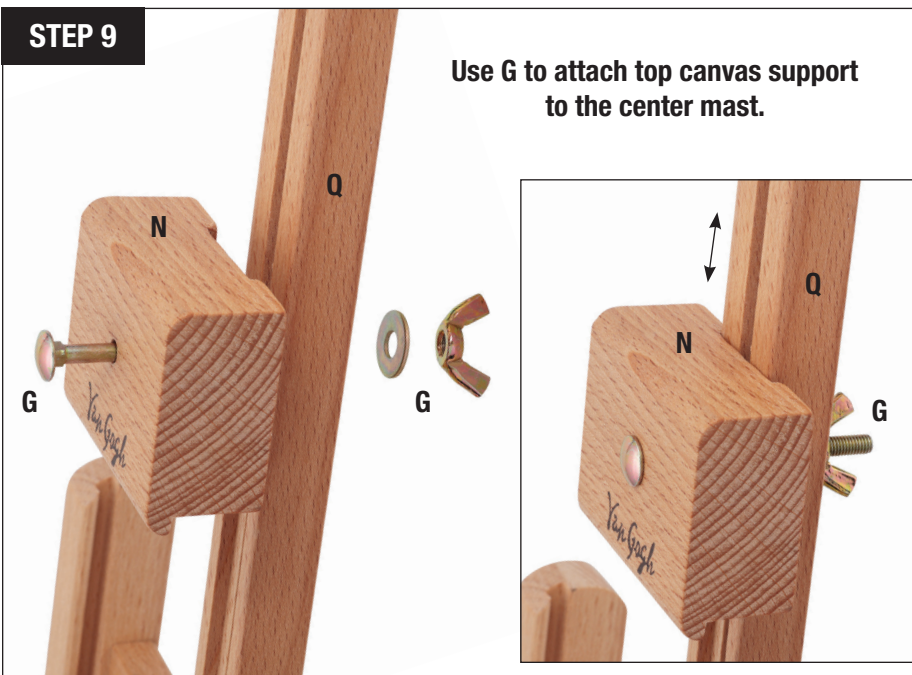
STEP 8

Use I to attach the center mast to the H-frame.



STEP 9

Use G to attach top canvas support to the center mast.



Complete!

