

COLOUR CHART

- = not available in 30ml bottle (439)
- = not available in Brush Pen (100 and 801)
- 🍷 = also available in 490ml and 990ml bottle

WHITE 100 🍷	PASTEL YELLOW 226	LEMON YELLOW 205 🍷	LIGHT YELLOW 201 🍷	CHARTREUSE 233	DEEP YELLOW 202 🍷
LIGHT ORANGE 236 🍷	DEEP ORANGE 237 🍷	PASTEL RED 381	VERMILION 311	SCARLET 334 🍷	CARMINE 318 🍷
PASTEL ROSE 390	LIGHT ROSE 361	MAGENTA 337 🍷	FUCHSIA 350	RED VIOLET 545 🍷	PASTEL VIOLET 579
BLUE VIOLET 548 🍷	ULTRAMARINE VIOLET 507	PASTEL BLUE 580	SKY BLUE LIGHT 551	SKY BLUE (CYAN) 578 🍷	ULTRAMARINE LIGHT 505
ULTRAMARINE DEEP 506 🍷	PRUSSIAN BLUE 508 🍷	INDIGO 533	TURQUOISE BLUE 522 🍷	BLuish GREEN 640	FIR GREEN 654
TURQUOISE GREEN 661	PASTEL GREEN 666	LIGHT GREEN 601 🍷	GREEN 600 🍷	SPRING GREEN 665	GRASS GREEN 676
BRONZE GREEN 657	FOREST GREEN 656	DEEP GREEN 602 🍷	BEIGE 420	PINK BEIGE 374	APRICOT 258
SAND YELLOW 259	GOLD OCHRE 231	YELLOW OCHRE 227 🍷	SAFFRON YELLOW 245	DEEP OCHRE 407	BURNT SIENNA 411 🍷
REDDISH BROWN 422	MAHOGANY 441	SEPIA LIGHT 439 ■ GOLD 801 ●	SEPIA 416 🍷	SEPIA DEEP 440	WARM GREY LIGHT 728
COLD GREY LIGHT 738	GREY 704	COLD GREY 717 🍷	WARM GREY 718	DEEP GREY 706	BLACK 700 🍷



Forgotten to put the cap back on? A dried brush tip can be easily saved by moistening it with some water.
The Brush Pen is available in 60 colours and a blender.

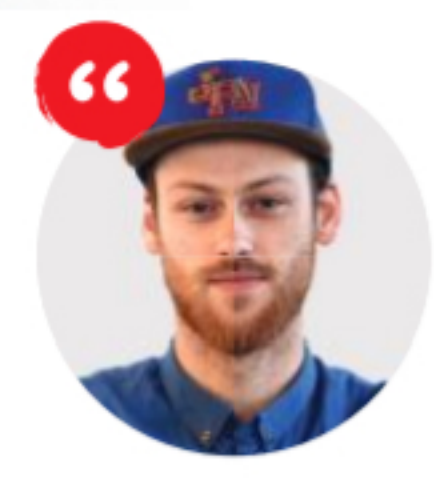


TALENS ECOLINE

TALENS ECOLINE HAS BEEN PART OF THE CREATIVE LANDSCAPE SINCE 1930.

Whether this involves artistic impressions, product design, illustrations, fashion design, calligraphy or children's drawings, the brilliant colours of this liquid water colour paint bring every piece of art to life. Talens Ecoline is available now in 60 colours.

Talens Ecoline is available in 30 ml bottles and in 490 ml and 990 ml refill packs. Handy Brush Pens are also available, ready for immediate use.



JESSE STRIKWERDA
Illustrator

"As an illustrator I use the computer a great deal. The Talens Ecoline Brush Pen has the attractive, bright colour that we are familiar with from Talens Ecoline. It is wonderful drawing with it, but when thinned with water it is great for creating water colour sections. I enjoy bringing my illustrations to life in this way."