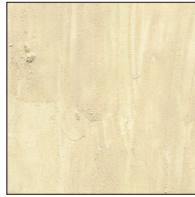


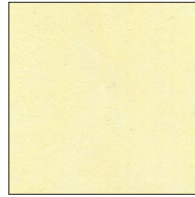
## R&F DRAWING OILS™ COLOR CHART



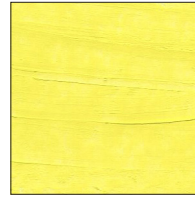
Titanium-Zinc  
White



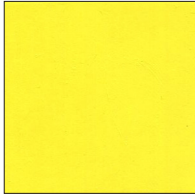
Unbleached  
Titanium



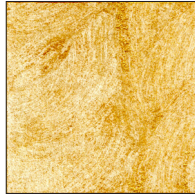
Brilliant Yellow  
Extra Pale



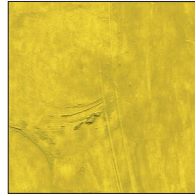
Nickel Yellow



Cadmium Yellow  
Light



Ancient Gold



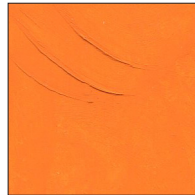
Olive Yellow



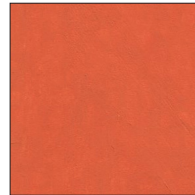
Mars Yellow Light



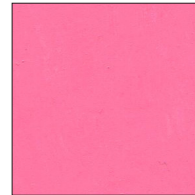
Jaune Brillant



Cadmium Orange



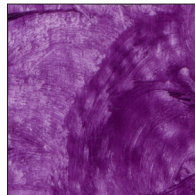
Warm Pink



Dianthus Pink



Quinacridone  
Magenta Light



Manganese  
Violet



Egyptian Violet



Quinacridone  
Red



Quinacridone  
Magenta



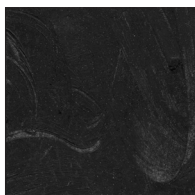
Mars Red



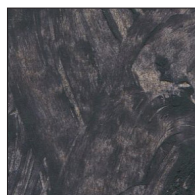
Brown Pink



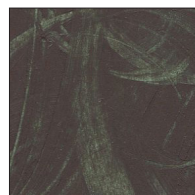
Raw Umber



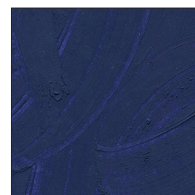
Mars Black



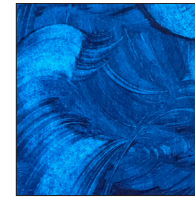
Payne's Grey



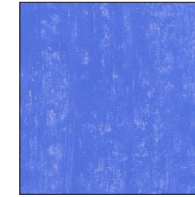
Cherry Absinthe



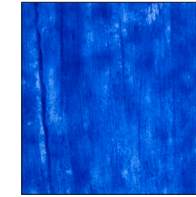
Midnight Blue



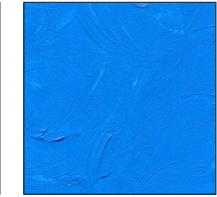
Phthalo Blue



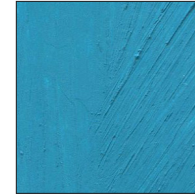
Provence Blue



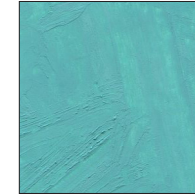
Cobalt Blue



Azure Blue



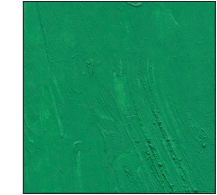
Turquoise Blue



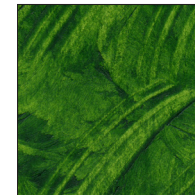
Malachite Green



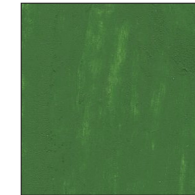
Permanent Green



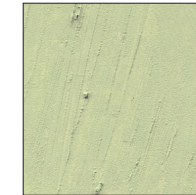
Veronese  
Green



Sap Green



Chromium  
Oxide Green



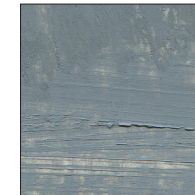
Celadon Green



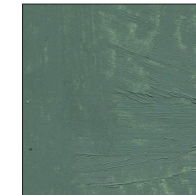
Cerulean  
Extra Pale



Cerulean Grey



Neutral Grey  
Medium



Turkey Umber  
Pale



Iridescent Pewter

**R&F DRAWING OILS™** contain linseed oil and will form a natural skin on the outside of the stick. We recommend gently removing this prior to use. Use a pencil or crayon sharpener (.50" diameter), a razor blade, or simply draw on a piece of scrap paper. Wiping the end of the **R&F Drawing Oil™** with a tissue prior to use will ensure a more effortless drawing experience.

The size, shape, and formulation (less oil, more wax) make **R&F DRAWING OILS™** ideal for play and practice, pairing well with your favorite sketchbooks, stretched canvas, and panels. For finished artwork requiring archival stability, we recommend preparing your surface with gesso. Thank you for choosing R&F. KEEP DRAWING.

**R&F**  
UNIQUE COLOR

84 Ten Broeck Ave | Kingston, NY 12401 | 845.331.3112 | [rfpaints.com](http://rfpaints.com)



# R&F DRAWING OIL™ COLORS

## COLOR CHART KEY

COLOR NAME   COLOR INDEX # chemical composition	TR	DR
--	----	----

TR = TRANSPARENCIES: O = OPAQUE | ST = SEMI-TRANSPARENT | T = TRANSPARENT  
DR = DRYING RATES: F\* = VERY FAST | F = FAST | M = MEDIUM | S = SLOW | S\* = VERY SLOW  
⚠ **WARNING:** Cancer and Reproductive Harm - [www.p65warnings.ca.gov](http://www.p65warnings.ca.gov)

Revision 3/2025

ANCIENT GOLD metal oxides on mica	ST	S*	NICKEL YELLOW   PY53 antimony nickel titanium oxide yellow ⚠	O	S*
AZURE BLUE   PW6, PW4, PB29, PB15:3 titanium dioxide, zinc oxide, sodium aluminum sulfo-silicate, copper phthalocyanine	O	M	OLIVE YELLOW   PY37, PV15, PY42   c.p. cadmium sulfide, sodium aluminum sulfo-silicate, synthesized iron oxide	ST	S
BRILLIANT YELLOW EXTRA PALE   PW6, PW4, PY37 titanium dioxide, zinc oxide, c.p. cadmium sulfide ⚠	O	S*	PAYNE'S GREY   PB7, PB29, PV19   natural earth, calcined, sodium aluminum sulfo-silicate, quinacridone	ST	F*
BROWN PINK   PR101 transparent iron oxide	T	M	PERMANENT GREEN   PW6, PW4, PG7, PY37 titanium dioxide, zinc oxide, chlorinated copper phthalocyanine, c.p. cadmium sulfide ⚠	O	S*
CADMIUM ORANGE   PO20 c.p. cadmium sulfo-selenide ⚠	O	S*	PHTHALO BLUE   PB15:3 copper phthalocyanine	T	M
CADMIUM YELLOW LIGHT   PY37 c.p. cadmium sulfide ⚠	O	M	PROVENCE BLUE   PW6, PW4, PB29, PV23   titanium dioxide, zinc oxide, sodium aluminum sulfo-silicate, dioxazine	O	S
CELADON GREEN   PW6, PW4, PG17, PY37 titanium dioxide, zinc oxide, chromium oxide, c.p. cadmium sulfide ⚠	O	M	QUINACRIDONE MAGENTA   PV19 quinacridone	T	M
CERULEAN EXTRA PALE   PW6, PW4, PB36 titanium dioxide, zinc oxide, cobalt chromite ⚠	O	S*	QUINACRIDONE MAGENTA LIGHT   PV19, PW6, PW4   quinacridone, titanium dioxide, zinc oxide	O	M
CERULEAN GREY   PW6, PW4, PB36, PB7 titanium dioxide, zinc oxide, cobalt chromite, natural earth ⚠	O	M	QUINACRIDONE RED   PV19 quinacridone	T	S
CHERRY ABSINTHE   PY42, PR108, PG7 synthetic iron oxide, c.p. cadmium sulfo-selenide, chlorinated copper phthalocyanine ⚠	O	M	RAW UMBER   PB7 natural earth	ST	F*
CHROMIUM OXIDE GREEN   PG17 anhydrous chromium sesquioxide ⚠	O	S	SAP GREEN   PY83, PG7, PR101 disazo (diarylide), chlorinated copper, transparent iron oxide	T	S
COBALT BLUE   PB28 cobalt aluminate ⚠	O	S*	TITANIUM-ZINC WHITE   PW6, PW4 titanium dioxide, zinc oxide	O	S
DIANTHUS PINK   PW6, PW4, PV19 titanium dioxide, zinc oxide, quinacridone	O	S	TURKEY UMBER PALE   PW6, PW4, PB7, PG7 titanium dioxide, zinc oxide, natural earth, calcined, chlorinated copper phthalocyanine	O	F
EGYPTIAN VIOLET   PV23 dioxazine	T	S*	TURQUOISE BLUE   PW6, PW4, PB15:3, PG7 titanium dioxide, zinc oxide, copper phthalocyanine, chlorinated copper phthalocyanine	O	M
IRIDESCENT PEWTER metal oxides on mica	ST	M	UNBLEACHED TITANIUM   PW6 titanium dioxide rutile	O	F
JAUNE BRILLANT   PW6, PW4, PO20, PY37, PR101 titanium dioxide, zinc oxide, c.p. cadmium sulfo-selenide & sulfide, synthesized iron oxide ⚠	O	S*	VERONESE GREEN   PW6, PW4, PG7, PY37 titanium dioxide, zinc oxide, chlorinated copper phthalocyanine, c.p. cadmium sulfide ⚠	O	S
MALACHITE GREEN   PW6, PW4, PG7, PB29 titanium dioxide, zinc oxide, chlorinated copper	O	S	WARM PINK   PW6, PW4, PV19, PR108, PY37 titanium dioxide, zinc oxide, quinacridone, c.p. cadmium ⚠	O	S
MANGANESE VIOLET   PV16 manganese ammonium phosphate	ST	S			
MARS BLACK   PBk11 ferroso-ferric oxide	O	S			
MARS RED   PR101 synthesized iron oxide, calcined	O	M			
MARS YELLOW LIGHT   PY42 synthesized iron oxide, precipitated	O	M			
MIDNIGHT BLUE   PW6, PW4, PV23, PG7 titanium dioxide, zinc oxide, dioxazine, chlorinated copper phthalocyanine	O	S*			
NEUTRAL GREY MEDIUM   PW6, PW4, PB28, PB7 titanium dioxide, zinc oxide, cobalt aluminate, natural earth ⚠	O	F*			

Drawing inspiration from R&F Pigment Sticks®, **R&F DRAWING OILS™** offer a smooth & portable drawing experience with a harder formulation (less oil, more wax). Unlike oil pastels, crayons, or chalk, **R&F DRAWING OILS™** will dry to form a permanent, protective oil film. No need for fixative.

R&F  
DRAWING  
OILS

R&F  
DRAWING  
OILS™  
OIL PAINT IN STICK FORM  
MADE WITH LINSEED OIL, PIGMENT & NATURAL WAX

COLOR CHART