

Heavily Textured Painting



INTRODUCTION

This project uses **Liquitex Heavy Body colors, Liquitex Gloss Super Heavy Gel and Liquitex palette knives** to create richly textured paintings.

The paintings can be made on canvas or panel, or any suitable surface for acrylics (avoid slick, non-porous surfaces or rubbery surfaces for best adhesion).

Any type of imagery can be used with this texture producing process. To make the unique texture markings stand out, larger shapes tend to work best. A desire to play and experiment is key to having fun with this technique!

This project is great for both beginner and advanced painters.

Time: 1.5 hours recommended plus drying time once completed. Paint and gel thicker than about 1/8" will be touch dry within a few hours. It can take a week or two for the thick paint to be fully dry.

MATERIALS LIST

1. Liquitex Heavy Body Colors (your choice)
 2. Liquitex Gloss Super Heavy Gel
 3. Liquitex Freestyle Palette Knives (in shapes/sizes of your choice)
 4. Canvas or panels (300 lb. watercolor paper will work but anything else will be too thin for the texture)
 5. Pencil and ruler to sketch (if needed)
 6. Palette paper or other non-stick surface for mixing color
 7. Paper towels or clean rag
- Optional:**
- Paper to cover work surface





PROJECT STEPS



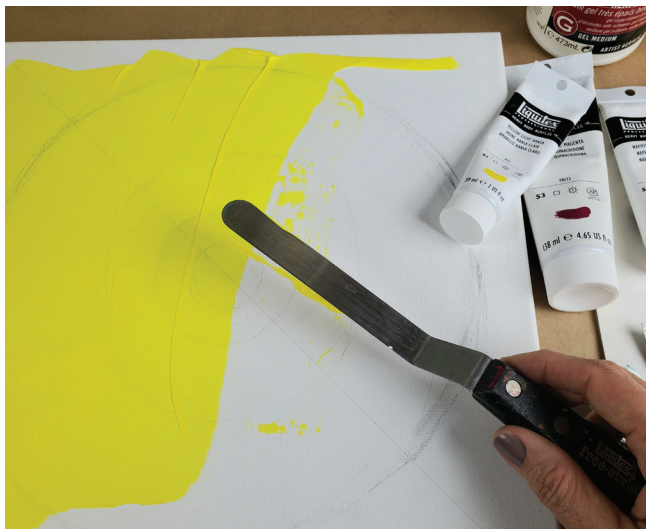
STEP 1: Set Up and Prep

Prepare your work area by putting down paper to protect the surface. Gather your supplies and have them ready to go. Have a plan for your imagery. Is it going to be abstract shapes, is it going to be a loose landscape or portrait? What colors will you use? Complementary colors add drama while analogous colors tend to be more soothing. If you need to reference a photo, have that handy as well.



STEP 2: Layout

Sketch out your design as needed. Work lightly with pencil so it can't be seen in your finished artwork.



STEP 3: Base Coat

Pick either a contrasting color or a similar color to cover the surface before you add the thick textured paint. This step will add interest underneath the palette knife marks. Allow this thin layer to get touch dry (about 20 minutes or so). Using a large palette knife to trowel on the base color makes quick work of this step.



PROJECT STEPS



STEP 4: Mixing the Color

Scoop out the Gloss Super Heavy Gel onto the palette along with your Heavy Body color selections. Start with about 1 part color to 2-3 parts Gloss Super Heavy Gel. The more Gloss Super Heavy Gel you add, the more transparent the color will become. Since you'll have a great volume of color to use, you may want to mix one color at a time into the Gloss Super Heavy Gel.



STEP 5: Add the Paint to the Surface

Use a trowel shaped palette knife to apply an evenly thick layer of color and gel mixture on to your design.

TIP

The more evenly the paint is applied, the more uniform the added texture markings will be. If this isn't important for your piece, you can skip this step.



STEP 6: Creating Inviting Texture

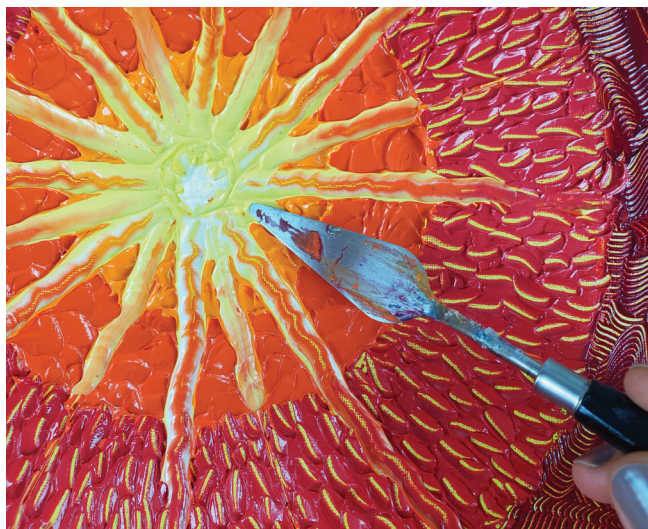
Choose a palette knife to add texture to the paint.

TIP

You may want to practice creating different repeating texture patterns with the knife on palette before the color is applied on your painting surface. Try turning the knife in different directions to see what patterns you can create.



PROJECT STEPS



STEP 7: Finishing Up

Feel free to add additional palette knife marks on the surface for added interest.

Once you're done, use some soap and water to clean your tools and work area, and then plan your next painting. The possibilities are limitless!





ABOUT THE ARTIST



Marla Morrison

A Texas native, Marla Morrison is an artist who seeks to show beauty in color, design, and the physical behaviors of art materials. For her, making art is about the process, just as much as the end result. While working in acrylic paint, for example, she uses pouring techniques that lend themselves to spontaneity and the interaction of color. She approaches the process as a conversation between herself and the artwork.

Marla received her MFA in painting from Claremont University and BFA in drawing from Texas State University. She is also an art instructor with TFAC for Liquitex and Winsor & Newton. When not in the studio, she can be found spending time with her husband and three children.

Her work has been shown and collected nationally. To see more of her work: Website: www.marlamorrisonart.com and Instagram: @marlamorrisonart

FOR MORE INSPIRATION, VISIT: <https://www.liquitex.com/us/>

ABOUT LIQUITEX

FOUNDED 1955

Challenging the established ways of doing things is in our DNA. It's how we invented the first water-based acrylic paint, and the reason why we have been innovating ever since. Empowering all artists to create with confidence and no limits.

